

PZ[©]turn

Portautensili modulari per tornitura a testine intercambiabili



CM MARANGONI SRL

*Viale dell'Industria 15/17
36057 - Arcugnano VI*

Tel 0444.544087

Fax 0444.320201

www.cmmarangoni.com

MAS[®]
TOOLS & ENGINEERING



Contenuto

Vantaggi e funzionalità		4
Chiave di codifica		5
Versioni stelo	Stelo quadro	6
Testine	Serie SCLCR	7
	Serie SDHCR	8
	Serie SDJCR	9
	Serie SVHCR	10
	Serie SVJCR	10
	Serie SVJBR	10
	Serie SDNCN	10
	Serie LNEX	10
	Serie LNEX Inserti speciali	10
	Serie GND	11
Versioni speciali		12
Accessori ed informazioni		13



PZ[®]turn

Vantaggi e Funzionalità

- Sistema cambio rapido con una sola vite di serraggio
- Stelo standard 12mm x 12 mm
- Massima precisione di ripetibilità, incluso l'altezza centro
- Multiuso per tutti i torni a fantina mobile
- Refrigerazione interna attraverso lo stelo, diretta sull'inserto
- Ottima accessibilità per la sostituzione delle testine intercambiabili

Chiave di codifica

Steli

PZ@turn	1	2	3
PZ	12x12 / 16x16	R	84

Descrizione

1	Joint	12x12 / 16x16	Stelo quadro 12x12 / 16x16
2	Versione	R	Destro
3	Stelo:	84	Lunghezza
X	Codice per versione speciale		

Testina intercambiabile

PZ@turn	1	2	3	4	5
PZ	12/16	K	SCLCR	0616	09

Descrizione

1	Joint	12/16	Stelo quadro 12x12 / 16x16
2	Versione	K	Testina intercambiabile
3	Applicazione WP	SCLCR09	Tipo inserto; serraggio; posizione montaggio; misura inserto
4		0616	Misura testina taglio
5	Inserto indexabile	09	Misura inserto
X	Codice per versione speciale		

Versioni Stelo

Stelo quadro



Stelo quadro	Nr ordine	L	L1	Filetto	Clamping screw		
12 x 12	PZ1212-R-84	84	71	M8 x 1 x 6	M5x0,5x5x60-E17019	SW3,5	3 Nm
16 x 16	PZ1616-R-84	84	71	M8 x 1 x 6	M6x0,75x10,5x60-E19291	SW4,5	5 Nm

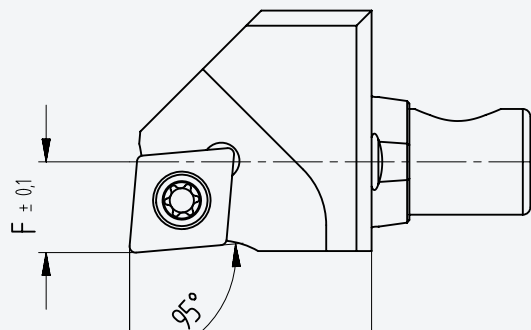
- Versione Acciaio

- Versione Stelo Quadro

- Lunghezze speciali disponibili a richiesta

Testine intercambiabili

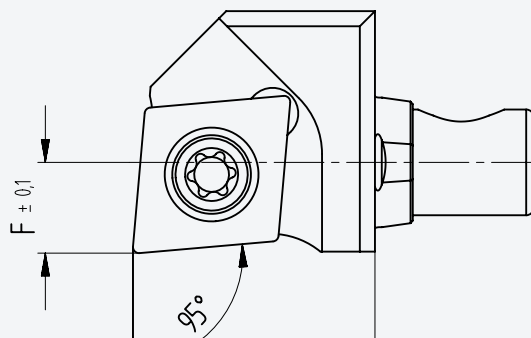
Serie SCLCR



In figura la versione
Destra

SCLCR series	F	L	Indexable insert	Order number	Screw
12 x 12	6	16	CC...0602	PZ12-K-SCLCR-0616-06	BFTX02506N 1,5Nm
16 x 16	8	16	CC...0602	PZ16-K-SCLCR-0816-06	BFTX02506N 1,5Nm

Serie SCLCR

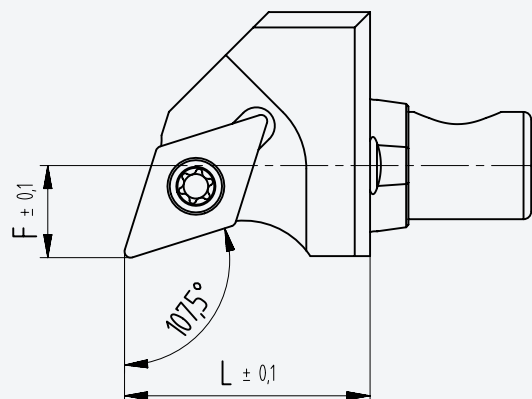


In figura la versione
Destra

SCLCR series	F	L	Indexable insert	Order number	Screw
12 x 12	6	16	CC...09T3	PZ12-K-SCLCR-0616-09	BFTX03588 3,4Nm
16 x 16	8	16	CC...09T3	PZ16-K-SCLCR-0816-09	BFTX03588 3,4Nm

Testine intercambiabili

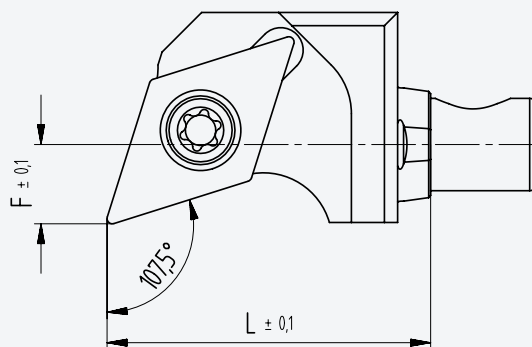
Serie SDHCR



In figura la versione
Destra

SDHCR series	F	L	Indexable insert	Order number	Screw
12 x 12	6	16	DC...0702	PZ12-K-SDHCR-0616-07	BFTX02506N 1,5Nm
16 x 16	8	16	DC...0702	PZ16-K-SDHCR-0816-07	BFTX02506N 1,5Nm

Serie SDHCR

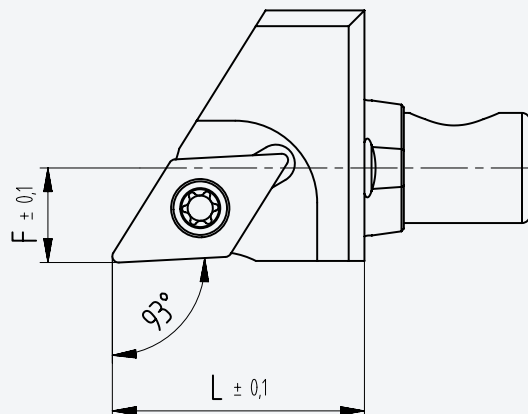


In figura la versione
Destra

SDHCR series	F	L	Indexable insert	Order number	Screw
12 x 12	6	22	DC...11T3	PZ12-K-SDHCR-0622-11	BFTX03588 3,4Nm
16 x 16	8	22	DC...11T3	PZ16-K-SDHCR-0822-11	BFTX03588 3,4Nm

Testine intercambiabili

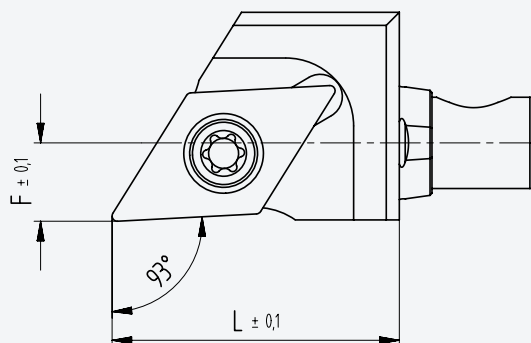
Serie SDJCR



In figura la versione
Destra

SDJCR series	F	L	Indexable insert	Order number	Screw
12 x 12	6	16	DC...0702	PZ12-K-SDJCR-0616-07	BFTX02506N 1,5Nm
16 x 16	8	16	DC...0702	PZ16-K-SDJCR-0816-07	BFTX02506N 1,5Nm

Serie SDJCR

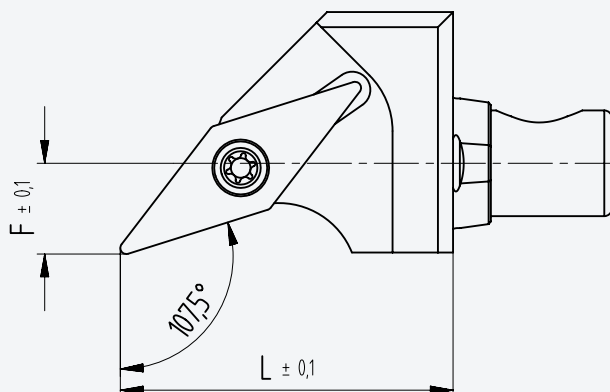


In figura la versione
Destra

SDJCR series	F	L	Indexable insert	Order number	Screw
12 x 12	6	22	DC...11T3	PZ12-K-SDJCR-0622-11	BFTX03588 3,4Nm
16 x 16	8	22	DC...11T3	PZ16-K-SDJCR-0822-11	BFTX03588 3,4Nm

Testine intercambiabili

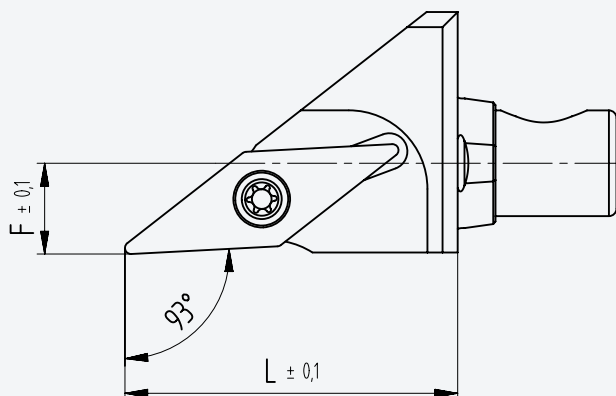
Serie SVHCR



In figura la versione
Destra

SVHCR series	F	L	Indexable insert	Order number	Screw
12 x 12	6	22	VC...1103	PZ12-K-SVHCR-0622-11	5513020-03 0,8Nm
16 x 16	8	22	VC...1103	PZ16-K-SVHCR-0822-11	5513020-03 0,8Nm

Serie SVJCR



In figura la versione
Destra

SVJCR series	F	L	Indexable insert	Order number	Screw
12 x 12	6	22	VC...1103	PZ12-K-SVJCR-0622-11	5513020-03 0,8Nm
16 x 16	8	22	VC...1103	PZ16-K-SVJCR-0822-11	5513020-03 0,8Nm

Testine intercambiabili

Serie SVJBR

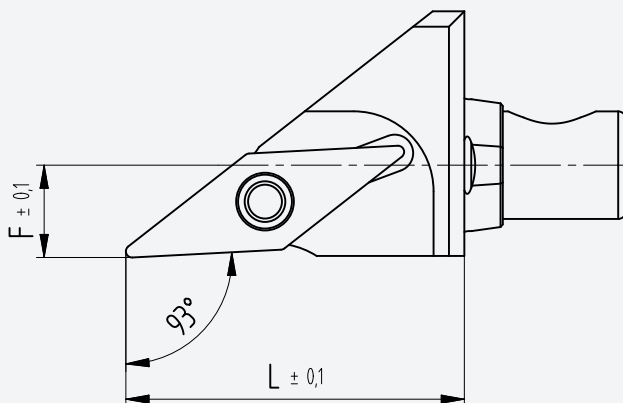


Illustration shows the right-hand version.

SVJBR series	F	L	Indexable insert	Order number	Screw
12 x 12	6	22	VB...1103	PZ12-K-SVJBR-0622-11	BFTX02506N 1,5Nm
16 x 16	8	22	VB...1103	PZ16-K-SVJBR-0822-11	BFTX02506N 1,5Nm

Serie SDNCN

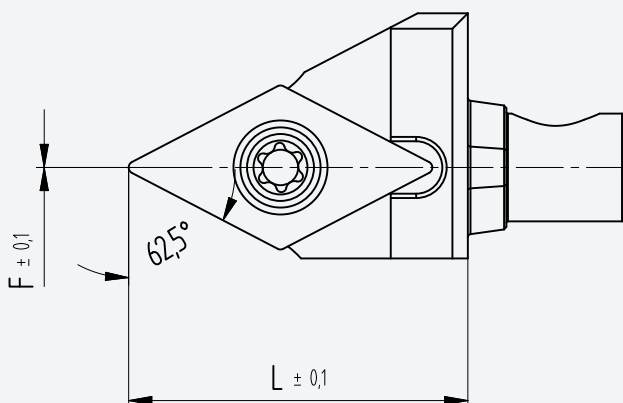


Illustration shows the right-hand version.

SDNCN series	F	L	Indexable insert	Order number	Screw
12 x 12	0	22	DC...11T3	PZ12-K-SDNCN-0022-11	BFTX03588 3,4Nm
16 x 16	3	22	DC...11T3	PZ16-K-SDNCN-0322-11	BFTX03588 3,4Nm

Testine intercambiabili

Serie LNEX

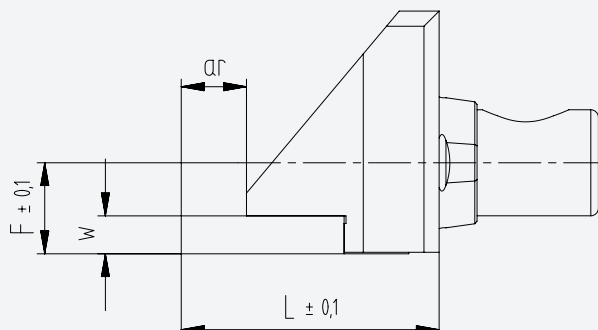


Illustration shows the right-hand version.

LNEX series	F	L	Indexable insert	Order number	Screw	W	ar
12 x 12	6	17	H-L0602	PZ12-K-LNEX-0617-0602	M2,5 x 5,5T x 8 3Nm	2mm	3,5
16 x 16	8	17	H-L0602	PZ16-K-LNEX-0817-0602	M2,5 x 5,5T x 8 3Nm	2mm	3,5
12 x 12	6	17	H-L0604	PZ12-K-LNEX-0617-0604	M2,5 x 8T x 8 3Nm	2mm	3,5
16 x 16	8	17	H-L0604	PZ16-K-LNEX-0817-0604	M2,5 x 8T x 8 3Nm	2mm	3,5

- Further plate varieties available on request.

Inserto tornitura per testina LNEX

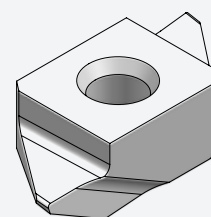
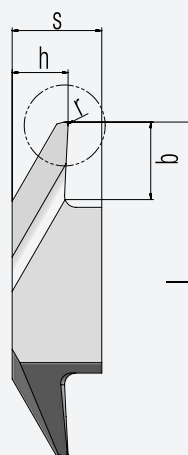
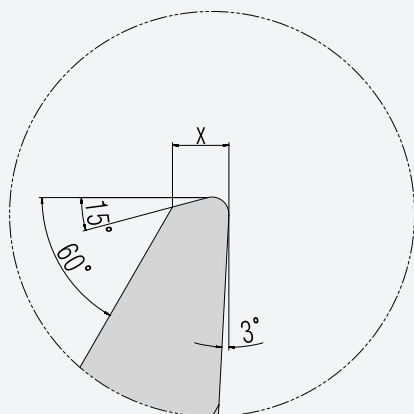


Illustration shows the right-hand version.

Execution	Order number	Coating	l	b	h	s	r
right-hand	LNEX0604015-R-HM20	no	14	3,5	2,5	4	0,15
right-hand	LNEX0604005-R-HM20	no	14	3,5	2,5	4	0,05
right-hand	LNEX0604015-R-HM50	yes	14	3,5	2,5	4	0,15
right-hand	LNEX0604005-R-HM50	yes	14	3,5	2,5	4	0,05
left-hand	LNEX0604015-L-HM20	no	14	3,5	2,5	4	0,15
left-hand	LNEX0604005-L-HM20	no	14	3,5	2,5	4	0,05
left-hand	LNEX0604015-L-HM50	yes	14	3,5	2,5	4	0,15
left-hand	LNEX0604005-L-HM50	yes	14	3,5	2,5	4	0,05

- Further plate varieties available on request.

Testine intercambiabili

Serie GND

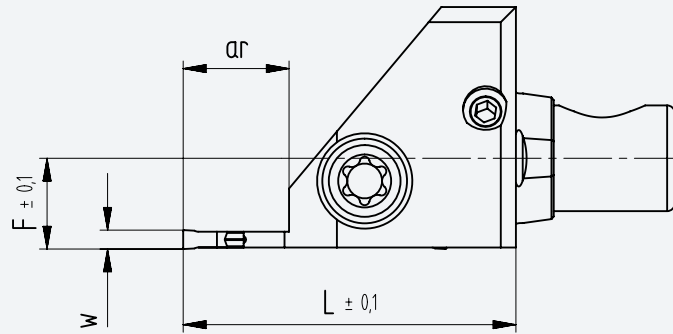


Illustration shows the right-hand version.

GND series	F	L	Indexable insert	Order number	Screw	W	ar
12 x 12	6	22	GCMN125005	PZ12-K-GNDR-0622-H12507	BFTX0414 4Nm	1,25mm	7
16 x 16	8	22	GCMN125005	PZ16-K-GNDR-0822-H12507	BFTX0414 4Nm	1,25mm	7
12 x 12	6	22	GCMN150005	PZ12-K-GNDR-0622-H15007	BFTX0414 4Nm	1,5mm	7
16 x 16	8	22	GCMN150005	PZ16-K-GNDR-0822-H15007	BFTX0414 4Nm	1,5mm	7
12 x 12	6	25	GCMN2002	PZ12-K-GNDR-0625-H212	BFTX0414 4Nm	2,0mm	12
16 x 16	8	25	GCMN2002	PZ16-K-GNDR-0825-H212	BFTX0414 4Nm	2,0mm	12
12 x 12	6	25	GCMN3002	PZ12-K-GNDR-0625-H312	BFTX0414 4Nm	3,0mm	12
16 x 16	8	25	GCMN3002	PZ16-K-GNDR-0825-H312	BFTX0414 4Nm	3,0mm	12

- Further plate varieties available on request.

Serie GND

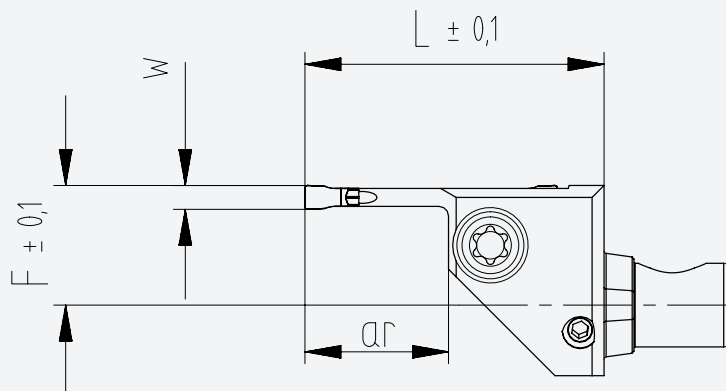


Illustration shows the left-hand version.

GND series	F	L	Indexable insert	Order number	Screw	W	ar
12 x 12	10	22	GCMN125005	PZ12-K-GNDL-1022-H12507	BFTX0414 4Nm	1,25mm	7
16 x 16	12	22	GCMN125005	PZ16-K-GNDL-1222-H12507	BFTX0414 4Nm	1,25mm	7
12 x 12	10	22	GCMN150005	PZ12-K-GNDL-1022-H15007	BFTX0414 4Nm	1,5mm	7
16 x 16	12	22	GCMN150005	PZ16-K-GNDL-1222-H15007	BFTX0414 4Nm	1,5mm	7
12 x 12	10	25	GCMN2002	PZ12-K-GNDL-1025-H212	BFTX0414 4Nm	2,0mm	12
16 x 16	12	25	GCMN2002	PZ16-K-GNDL-1225-H212	BFTX0414 4Nm	2,0mm	12
12 x 12	10	25	GCMN3002	PZ12-K-GNDL-1025-H312	BFTX0414 4Nm	3,0mm	12
16 x 16	12	25	GCMN3002	PZ16-K-GNDL-1225-H312	BFTX0414 4Nm	3,0mm	12

- Further plate varieties available on request.

Soluzioni speciali: esempi

Serie CXJBR

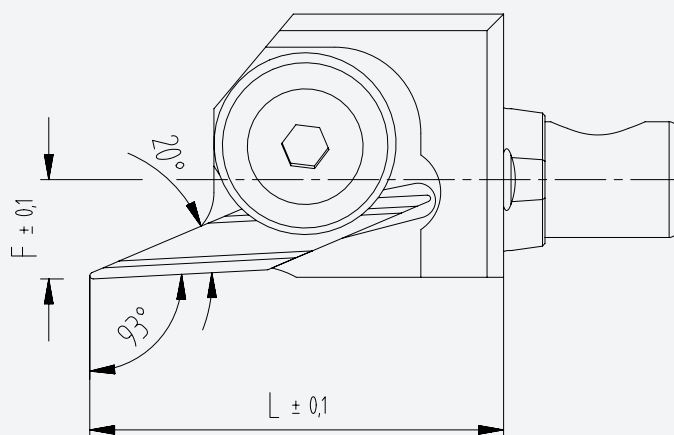


Illustration shows the right-hand version.

CXJBR series	F	L	Indexable insert	Order number	Screw
12 x 12	6	25	XBGR	PZ12-K-CXJBR-0625-10	K17385 M5 links 4Nm
16 x 16	8	25	XBGR	PZ16-K-CXJBR-0825-10	K17385 M5 links 4Nm

Serie filettare STS

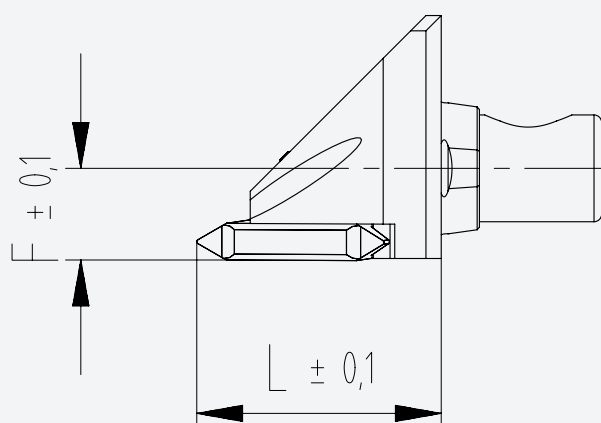


Illustration shows the right-hand version.

STS series	F	L	Indexable insert	Order number	Screw
12 x 12	6	16	12E...	PZ12-K-STs-0616-11	STS T9xm3 2Nm
16 x 16	8	16	12E...	PZ16-K-STs-0816-11	STS T9xm3 2Nm

- Further plate varieties available on request.

Accessori

Prolunga intercambiabile e bussola esagonale



Version	Application area	Order number
1/4 Zoll	PZ 12 / 16	WECHSELKLINGE 1/4 ZOLL
SW 3,5	PZ12	6-KANT EINSATZ SW3,5
SW4,5	PZ16	6-KANT EINSATZ SW4,5

Cacciavite dinamometrico WIHA



Version	Application area	Order number
3Nm	PZ12	screwdriver torque 3Nm
5Nm	PZ16	screwdriver torque 5Nm

Versioni Speciali

Esempi

